

SCIENCE MUSEUM GROUP

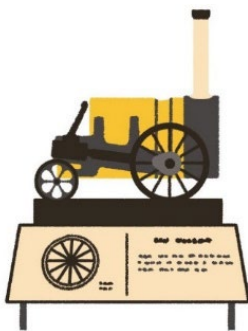
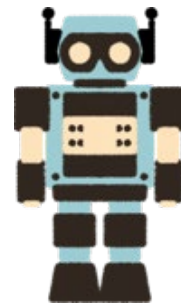
HOW TO EXPLORE STEM CAREERS THROUGH MUSEUMS

Museums are full of inspirational stories of how science and technology have shaped our modern world which makes them a great place to explore and spark discussion about the wide range of people who have used science, technology, engineering and maths in their jobs and careers. Exploring careers can be embedded into any museum visit to support your careers programme and help you reach the Gatsby benchmarks.

Here are some ideas to inspire exploration of careers on your next visit...

SHOW WHERE SCIENCE AND MATHS LEAD

By connecting the past, present and future of our world, museums show how an understanding of science, technology, engineering and maths – alongside art and design – has improved and even transformed our everyday lives. By linking and making connections to the topics that are taught in the classroom and finding examples which are relevant to your group's interests and their lives, you can broaden the perception that science and maths are just more than subjects learned in school and show that they open the doors to many different jobs and opportunities



REFLECT ON THE JOURNEY OF AN OBJECT

Everything we use, including objects in a museum, has been imagined, designed, engineered or manufactured. All the objects you see have travelled a path involving the input of many different people, with a broad range of knowledge, skills and passions. Pause and think about all the different processes and stages that are involved in producing these things. For example, start from how the raw materials were extracted and turned into useful materials, then describe how the product was designed and tested, and finally you could explore how it ended up with its owner or even how it came to be in the museum.

EXPLORE HOW PEOPLE HAVE SHAPED STEM

From their passion and inspiration to their hard work and determination, a wide range of people – past and present – have all played their part in shaping and improving the world around us. Science and technology can be found in everything we use and involve the work of hundreds of people, all bringing their own skills and effort to make the magic happen. Stop and reflect on how many people and different roles were needed in the development of everyday items. Seek out the stories about the people behind technology and innovations – not just the inventors but all the people who make things happen.





TALK TO THE STAFF IN THE MUSEUM ABOUT THEIR JOBS

A museum is itself a vibrant and varied workplace. Every member of staff you meet on a visit has an essential role to play in the running of the museum – ranging from visitor experience, learning and education, estate management, marketing, media and digital, to conservation and curatorial, to those creating exhibitions and events. Encourage your group to ask members of staff about the role they play and what skills they use every day. This can help your group gain insight into a dynamic and creative working environment and imagine themselves in the real world of work.

INVITE A STEM AMBASSADOR

Nothing beats a real-life encounter and a connection with people. So why not invite someone who uses science in their work (eg a STEM Ambassador) to accompany your visit to the museum to share their real-world experience, and provide a personal context to the things your group will see and experience? It can bring in an authentic voice who can talk about their role and everyday work, and how it stemmed from and built on the science and technology that can be found in the museum.



HIGHLIGHT, USE AND DEVELOP STEM SKILLS

Museums hold stories of how work and careers have changed and evolved throughout time. As society changes, the one constant is the skills and passions that drive progress. The world of work continues to change at pace, and many jobs of the future haven't even been thought of yet. From communication to creativity, problem-solving and teamwork, highlight and reflect on the skills which are valuable and transferable to a range of different jobs and careers – in and beyond science. These transferable skills will help prepare young people for whatever the future holds.

BE INSPIRED AND IMAGINE A PROGRESSIVE FUTURE

What might the future look like? What could be improved? What can be made more efficient or cheaper? Anything is possible with imagination and inspiration – as objects in a museum can testify. Are there topics that are important or of interest to individual students, eg sports, entertainment, the environment, food or fashion? Are there brands or industries that particularly resonate with them? There are so many different jobs within any industry as well as roles which cross industries (eg finance and estates teams). Open your group's eyes to the possibilities that link to their values, interests, passion and know-how.



CONTINUE YOUR JOURNEY OF DISCOVERY

The experience shouldn't end when you leave the museum. Use the museum visit to spark conversations with your group. Did anything they experienced align with their interests, skills or personality? Did anything surprise them? Was there anything they wanted to find out more about? Share and display pictures from your visit to inspire further exploration in future lessons, and encourage your group to talk to their families and with people in your local community about the different skills and experience they use in their work and everyday lives.