
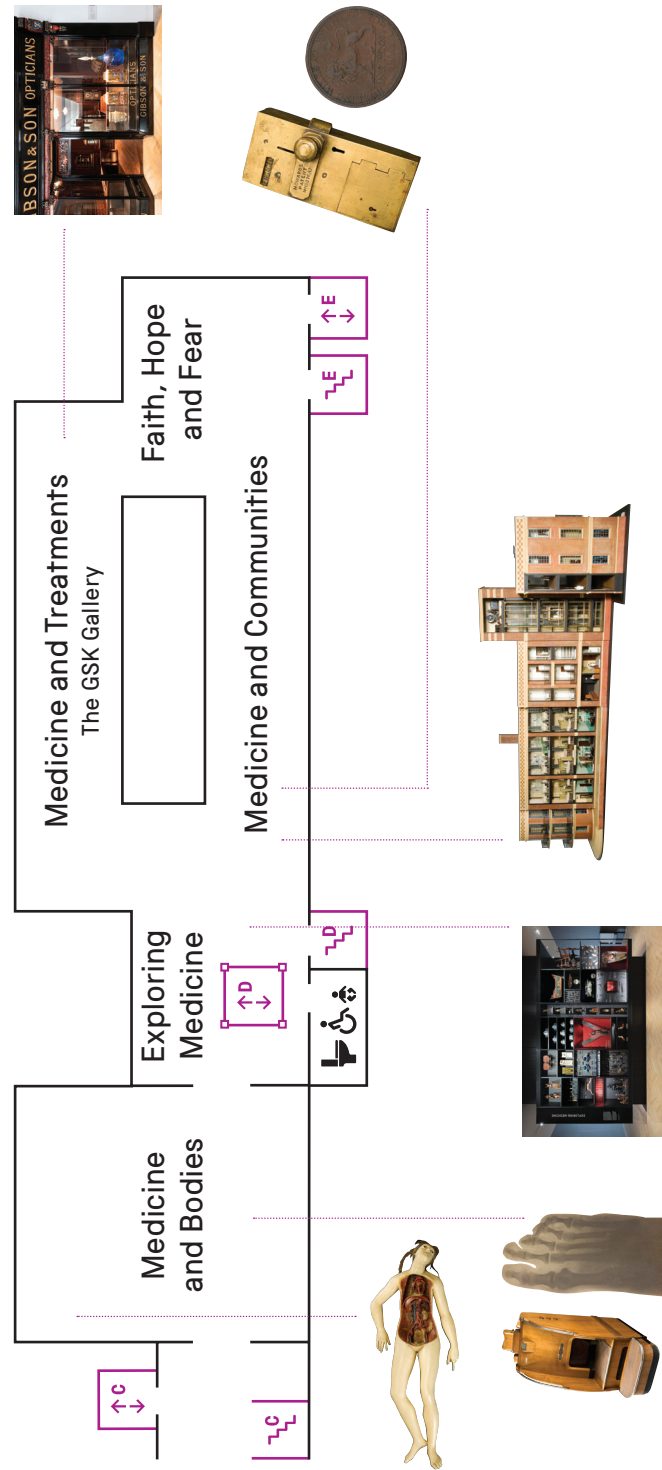






KS2 ACTIVITY TRAIL
MARVELS OF MEDICINE

<div>EXPLORING</div> <div></div>	Ages 5-7 7-11	Topics SCIENCE HEALTH	 30 MIN
	Skills used CURIOSITY • OBSERVATION • DISCUSSION		

ACTIVITY TRAIL

Map of Medicine: The Wellcome Galleries



TITLE FUNDER	SUPPORTED BY	PRINCIPAL SPONSOR	MAJOR FUNDER	MAJOR SPONSOR	FUNDERS	THANKS TO	MEDIA PARTNER
		 do more feel better live longer	The Wolfson* Foundation		Art Fund Stavros Niarchos Foundation (SNF)	Brifford Bridge Trust Medical Sciences Historical Society Dr Martin Schoernig An anonymous donor	The Observer

Seek and find...

Stand in the Exploring Medicine section and look all around you.

This cabinet holds over a thousand medical things.

How many of the objects pictured here can you find?



Talk about

Do any of the items surprise you?

Do you collect anything?

Explore more

Keep an eye out for objects that interest and amaze you in the museum and in your home.

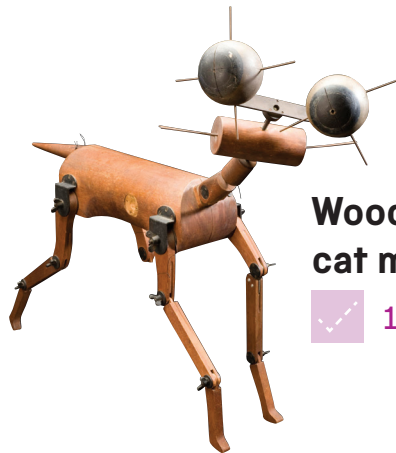
Merman

✓ 3 points



Wooden cat model

✓ 1 point



Mask

✓ 3 points



Baby carrier

✓ 2 points



Jar of gum

✓ 3 points



Blue glasses

✓ 1 point



Bicycle helmet

✓ 2 points



Falcon jar

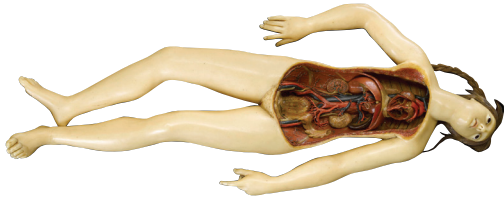
✓ 2 points



POINTS

Add up your points – what's your score?

Studying the dead



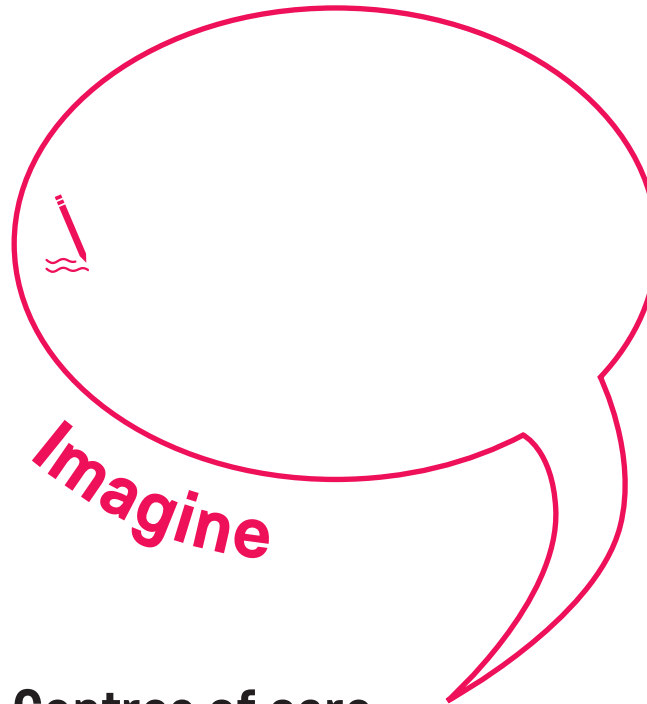
Find the wax Venus model.

How many different body parts can you see?

Can you name any of them?



Look closer



Imagine

Centres of care



Find the King's Fund model hospital.

Have a close look inside the hospital using the light-up buttons.

If you could shrink yourself, which rooms of this hospital would you visit?

Imaging the body

Supported by the Wolfson Foundation

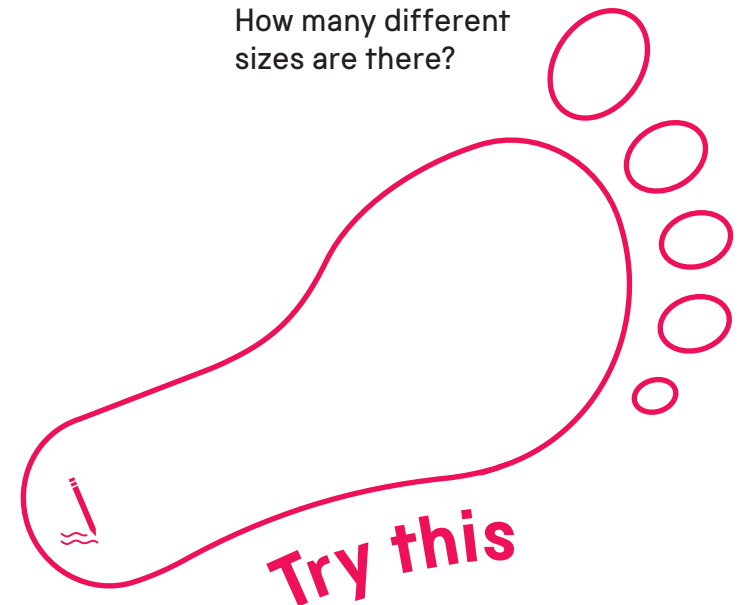


Find the foot X-ray machine (pedoscope).

Point to where the feet would go. Why is it important to check that shoes fit well?

Line up and compare the size of everyone's feet in your group.

How many different sizes are there?



Try this

Think about

Our journey with drugs



Find the pharmacy.

Look at the shelves and at the drawer labels. Does anything the shop sells surprise you?

Write a shopping list for a family visiting this pharmacy in 1911 and one for your family shopping in a pharmacy today.

How are the two lists different?



Talk about

Factors for health

Find the penny-operated toilet door lock.

The expression to 'spend a penny' is a polite way of saying to have a wee.

How do you and your family and friends say you need a wee?