
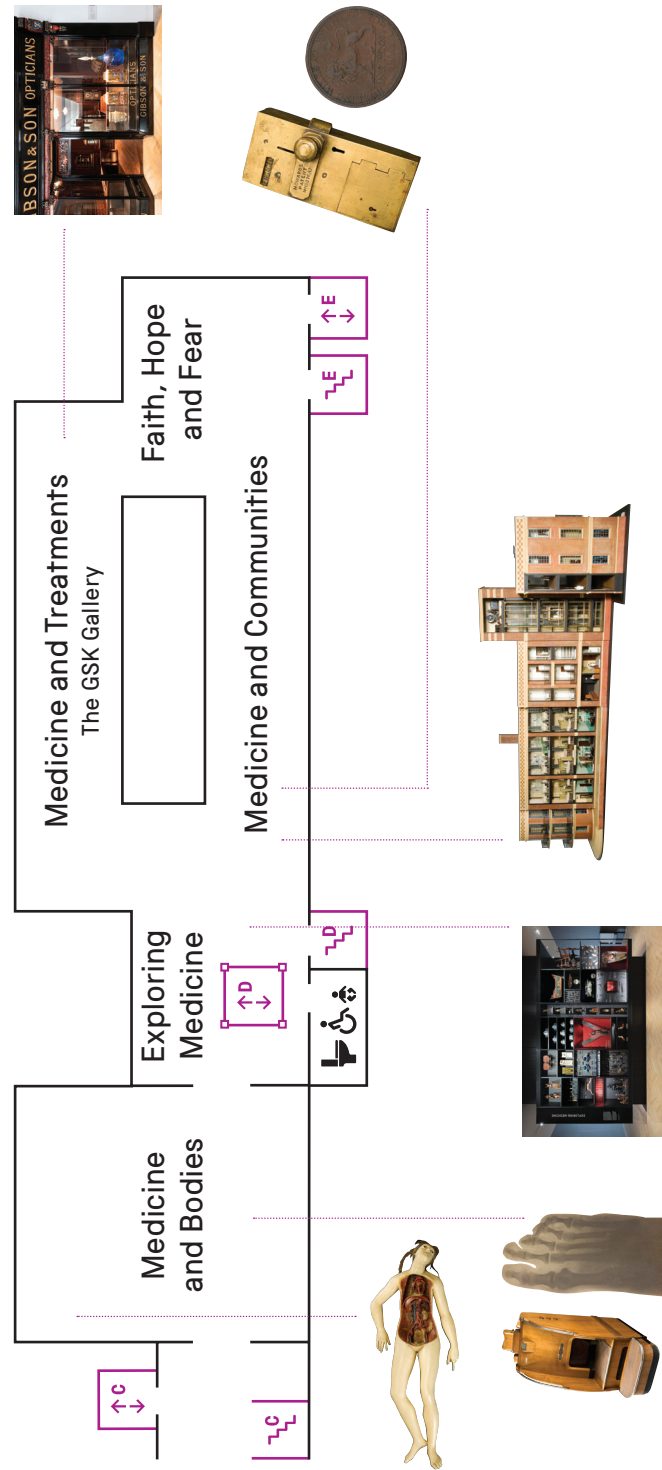






KS2 ACTIVITY TRAIL  
MARVELS OF MEDICINE

 EXPLORING	Ages <b>5-7</b> <b>7-11</b>	Topics <b>SCIENCE</b> <b>HEALTH</b>	 <b>30 MIN</b>
	Skills used <b>CURIOSITY • OBSERVATION • DISCUSSION</b>		

ACTIVITY TRAIL

Map of Medicine: The Wellcome Galleries



TITLE FUNDER	SUPPORTED BY	PRINCIPAL SPONSOR	MAJOR FUNDER	MAJOR SPONSOR	FUNDERS	THANKS TO	MEDIA PARTNER
		 do more feel better live longer	The Wolfson* Foundation	 VITABIOLOGICS SCIENCE OF HEALTHY LIVING	Art Fund Stavros Niarchos Foundation (SNF)	Brifford Bridge Trust Medical Sciences Historical Society Dr Martin Schoernig An anonymous donor	The Observer

# Seek and find...

Stand in the Exploring Medicine section and look all around you.

This cabinet holds over a thousand medical things.

How many of the objects pictured here can you find?



*Talk about*

Do any of the items surprise you?

Do you collect anything?

## Explore more

Keep an eye out for objects that interest and amaze you in the museum and in your home.

**Merman**

✓ 3 points



**Baby carrier**

✓ 2 points

**Jar of gum**

✓ 3 points



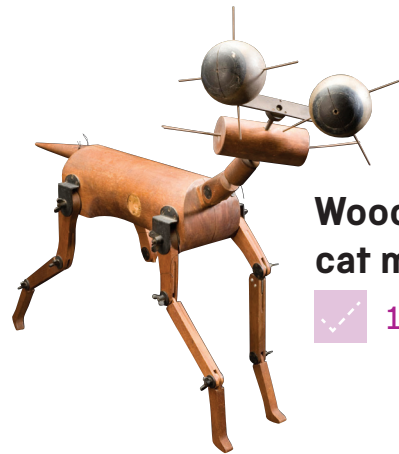
**Blue glasses**

✓ 1 point



**Wooden cat model**

✓ 1 point



**Bicycle helmet**

✓ 2 points



**Mask**

✓ 3 points



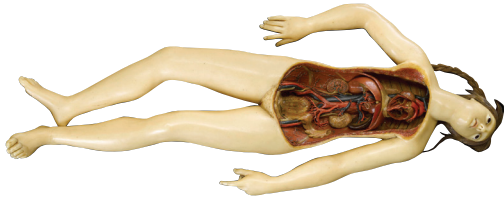
**Falcon jar**

✓ 2 points

**POINTS**

Add up your points – what's your score?

## Studying the dead



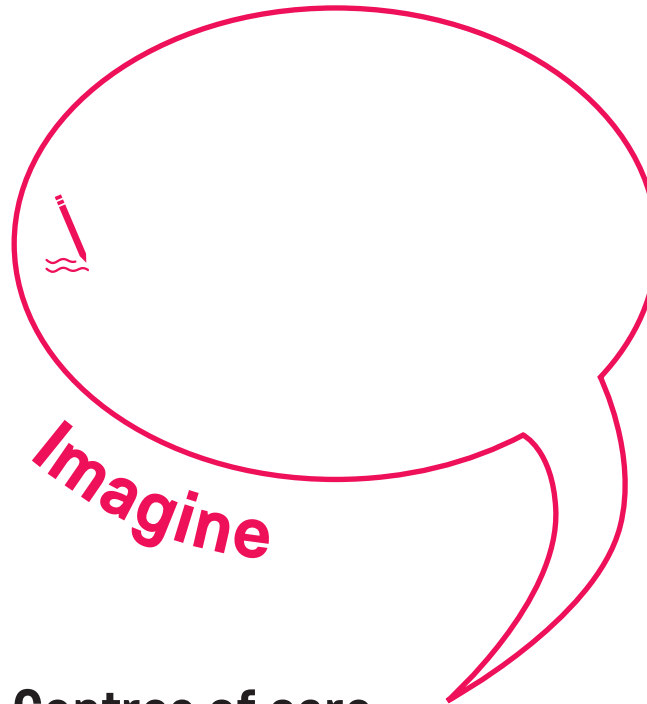
### Find the wax Venus model.

How many different body parts can you see?

Can you name any of them?



**Look closer**



**Imagine**

## Centres of care



### Find the King's Fund model hospital.

Have a close look inside the hospital using the light-up buttons.

If you could shrink yourself, which rooms of this hospital would you visit?

## Imaging the body

Supported by the Wolfson Foundation



### Find the foot X-ray machine (pedoscope) and the Medical Images Explorer.

Pull out the sliding drawers and find an X-ray of a foot. How many foot bones can you count?

Why is it important to have shoes that fit well?



**Try this**

**Think about**

## Our journey with drugs



### Find the pharmacy.

Look at the shelves and at the drawer labels. Does anything the shop sells surprise you?

Write a shopping list for a family visiting this pharmacy in 1911 and one for your family shopping in a pharmacy today.

How are the two lists different?



**Talk about**

## Factors for health

### Find the penny-operated toilet door lock.

The expression to 'spend a penny' is a polite way of saying to have a wee.

How do you and your family and friends say you need a wee?