

designed to be thrown away



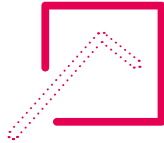
that you think is both beautiful and useful



that could not be made from glass



that is made from glass



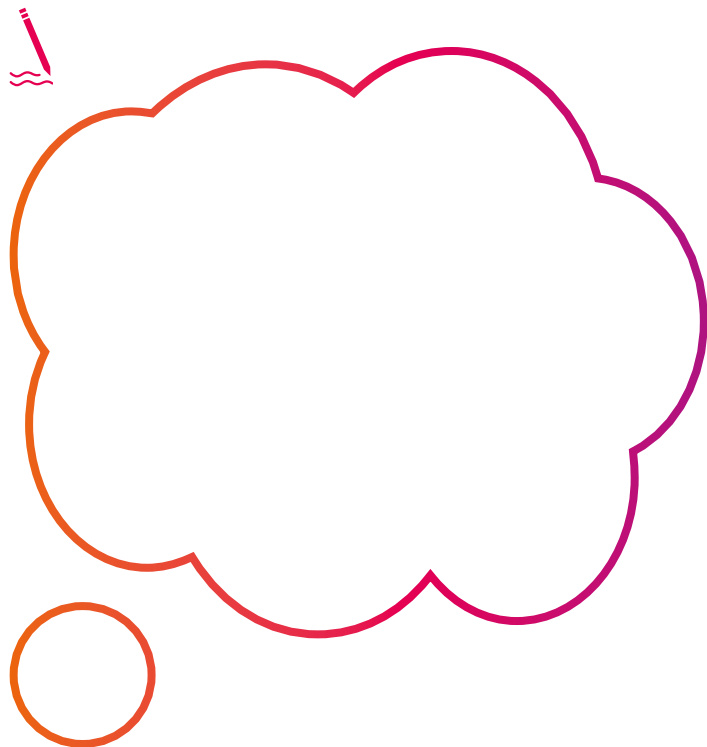
that was designed to solve a problem



Find something...

FOLD 1

Can you come up with your own challenge?



FOLD 2

For more ideas and activities visit: sciencemuseumgroup.org.uk/resources

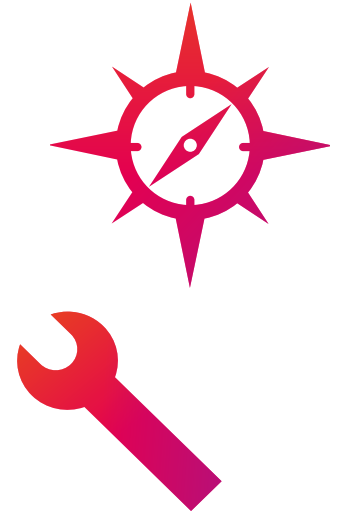
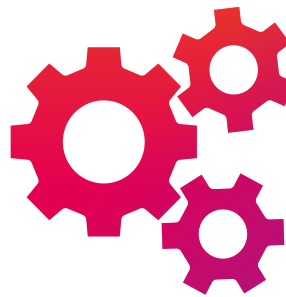
FINISHING TIME:	
MEETING POINTS:	
NAMES OF TEAM MEMBERS:	
TEAM NAME:	

- Find different objects for each challenge
- Look up, down and up close and see what you find
- Work together as a team and talk about your choices
- Write down or draw the different things that you find

Top tips for exploring...

Follow your curiosity and the things that interest you to explore the amazing objects in our galleries. Use your observation and questioning skills to get thinking and talking about how design and engineering shape our lives. See how many challenges you can complete in 30 minutes.

SCIENCE MUSEUM



GREAT OBJECT HUNT: DESIGN AND ENGINEERING

EXPLORING 	Topic DESIGN ENGINEERING	30 MIN
	Skills used MAKING OBSERVATIONS • COMMUNICATION	

Choose an object and create an advertising slogan for it



Find something...



that is more than 100 years old



made from five different materials



designed to be comfortable

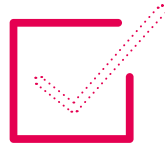


that could hold a liquid



that makes your life easier

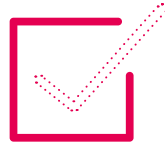
Find something...



that is made from lots of parts



that you think was expensive to make



that you wish you had invented



that would be useful at night



that could help you connect with your friends

Find something with an interesting pattern and draw it

